

MATERIALI E FINITURE

MATERIALS AND FINISHES | MATÉRIAUX ET FINITIONS | WERKSTOFFEN UND AUSFÜHRUNGEN

Colori Laccati | Lacquered colours | Couleurs laquées | Lackierte Farben

cat. F1

Laccato OPACO

MATT lacquered
Laqué MAT
MATT lackiert

cat. F2

Laccato LUCIDO

GLOSSY lacquered
Laqué BRILLANT
HOCHGLANZ lackiert

					
60 BIANCO	42 LATTE NCS S 0502-G50Y	01 NUDE NCS S 1002-Y	02 ROYAL NCS S 2002-Y	13 ELEGANT GREY NCS S 4500-N	16 DEEP GREY NCS S 7500-N
					
40 URBAN NCS S 8000-N	59 NERO NCS S 9000-N	0A POWDER NCS S 0804-Y30R	26 AUTUMN BEIGE NCS S 1505-Y30R	03 NATURE NCS S 4005-Y20R	05 WILD NCS S 6005-Y20R
					
0F ROMAN NCS S 6005-Y80R	06 DIVA NCS S 7005-Y80R	0U MOCHA NCS S 8502-R	04 COOKIE NCS S 2005-Y50R	0E BISCUIT NCS S 2010-Y60R	0B SAND NCS S1005-Y70R
					
1H MALVA NCS S 1515-Y90R	1E STAR DUST NCS S 3030-Y90R	1C MERLOT NCS S 5030-R10B	1J PARTY GIRL NCS S 1060-R20B	1P OLD PURPLE NCS S 6020-R50B	1L GLICINE NCS S 1040-R60B
					
1D BLUE TREND NCS S 3050-R80B	0Q OCEAN NCS S 6020-R90B	0V DENIM NCS S 8010-R70B	0S BAMBOU NCS S 7010-B50G	1F HUNTER NCS S 5020-G50Y	0K PISTACHO NCS S 4020-G50Y
					
1B SAGE NCS S 3005-G20Y	1G SKY NCS S 0510-B10G	0C SLATE NCS S 1502-B	07 FANCY NCS S 2002-R50B	0M VENETIAN NCS S 3010-B30G	0N CYPRUS NCS S 4020-B50G
					
0P TURQUOISE NCS S 4040-B20G	0R EUCALYPTUS NCS S 5540-B30G	0G EARTH NCS S 3010-Y30R	1M AMARETTO NCS S 3020-Y30R	1N SOFT GOLDEN NCS S 2030-Y20R	08 PRINCESS NCS S 0530-Y10R
					
1K AMALFI NCS S 0580-Y	1A APRICOT NCS S 1040-Y50R	1O IMPRUNETA NCS S 3030-Y50R	0I HAVANA NCS S 3040-Y70R	11 ROCK NCS S 2060-Y40R	18 MASSAI NCS S 1580-R

ATTENZIONE

Gli stessi colori applicati a materiali diversi possono subire leggere variazioni cromatiche.

NOTE

Colours can incur slight chromatic changes if applied to different materials.

ATTENTION

Les mêmes couleurs appliquées à différents matériaux peuvent subir de légères variations chromatiques.

ANMERKUNG

Bei der Anwendung auf unterschiedlichen Materialien kann es bei Farben zu leichten Farbveränderungen kommen.

MATERIALI E FINITURE

MATERIALS AND FINISHES | MATÉRIAUX ET FINITIONS | WERKSTOFFEN UND AUSFÜHRUNGEN

Finiture Nobilitato | Melamine finishes | Finitions Mèlaminés | Melaminholz

cat. F3

Nobilitato LEGNO

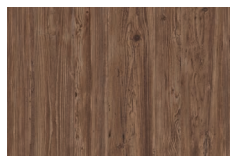
WOOD Melamine

Mèlaminé BOIS

HOLZ Melamin



12W
ABETE BIANCO



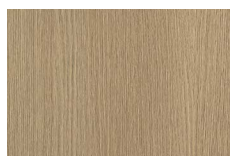
14W
ABETE BROWN



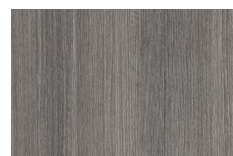
26W
ABETE ROCCIA



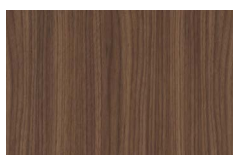
27W
ABETE FONDENTE



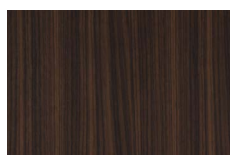
35W
ROVERE NATURAL



36W
JATOBA SABLÉ



37W
NOCE ROYAL



38W
NOCE POMPEI

cat. F3

Nobilitato ALTATTO

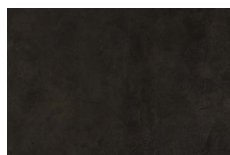
ALTATTO Melamine

Mèlaminé ALTATTO

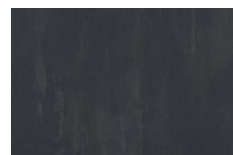
ALTATTO Melamin



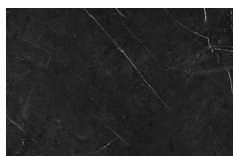
01I
LUNARE



02I
BIOTITE



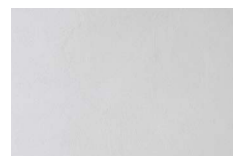
03I
GENESI



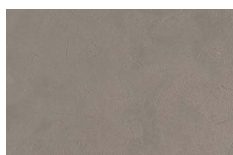
04I
MARKINA



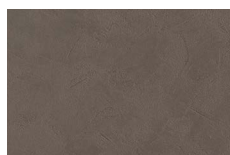
05I
TORANO



06I
SOLID ASH



07I
SOLID FOG



08I
SOLID CLAY

MATERIALI E FINITURE

MATERIALS AND FINISHES | MATÉRIAUX ET FINITIONS | WERKSTOFFEN UND AUSFÜHRUNGEN

AROCK®

Nel listino prezzi, tutti i colori della consolle in AROCK® sono nella stessa fascia.

In this price list, all colours for AROCK® consoles are in the same price range.

Dans le tarif, toutes les couleurs de la consolle en AROCK® sont dans la même tranche.

In dieser Preisliste sind alle Farbe für die Konsolen aus AROCK® Teil der gleichen Preisklasse.

					
60 BIANCO	42 LATTE	01 NUDE	02 ROYAL	13 ELEGANT GREY	16 DEEP GREY
					
40 URBAN	59 NERO	0A POWDER	26 AUTUMN BEIGE	03 NATURE	05 WILD
					
0F ROMAN	06 DIVA	0U MOCHA	04 COOKIE	0E BISCUIT	0B SAND
					
1H MALVA	1E STAR DUST	1C MERLOT	1J PARTY GIRL	1P OLD PURPLE	1L GLICINE
					
1D BLUE TREND	0Q OCEAN	0V DENIM	0S BAMBOU	1F HUNTER	0K PISTACHO
					
1B SAGE	1G SKY	0C SLATE	07 FANCY	0M VENETIAN	0N CYPRUS
					
0P TURQUOISE	0R EUCALYPTUS	0G EARTH	1M AMARETTO	1N SOFT GOLDEN	08 PRINCESS
					
1K AMALFI	1A APRICOT	1O IMPRUNETA	0I HAVANA	11 ROCK	18 MASSAI

MATERIALI E FINITURE

MATERIALS AND FINISHES | MATÉRIAUX ET FINITIONS | WERKSTOFFEN UND AUSFÜHRUNGEN

Le maniglie FILO, PONTE, TALETE e GOLA, sono sempre laccate dello stesso colore Opaco/Lucido del frontale. Per i frontali in Nobilitato LEGNO e ALTATTO seguono il colore Opaco come riportato nella tabella a fianco.























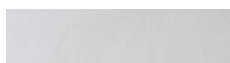
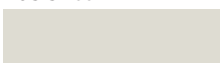







The handles mod. FILO, PONTE, TALETE and GOLA are always lacquered the same colour Matt/Glossy as the fronts. For the fronts in Melamine WOOD and ALTATTO matic finishes refer to the colours given in the adjacent table.

Les poignées FILO, PONTE, TALETE et GOLA sont toujours laquées de la même couleur Mat/Brillant que la façade. Pour les façades Mélangé BOIS et ALTATTO, suivre les couleurs indiquées dans le tableau à côté.

Die Griffe Mod. FILO, PONTE, TALETE und GOLA werden in der gleichen Farbe Matt/Hochglanz der Frontplatte ausgeführt. Für alle Frontplatten aus beschichtetem HOLZ und ALTATTO auf der nebenstehenden Tabelle verweisen.

Abbinamenti | Combinations | Assortiments | Farbkombinationen

Finiture Nobilitato | Melamine wood | Finitions Mélangées | Beschichtetes Holz

			
12W ABETE BIANCO	01 NUDE NCS S 1002-Y	011 LUNARE	13 ELEGANT GREY NCS S 4500-N
			
14W ABETE BROWN	1M AMARETTO NCS S 3020-Y30R	021 BIOTITE	0U MOCHA NCS S 8502-R
			
26W ABETE ROCCIA	05 WILD NCS S 6005-Y20R	031 GENESI	16 DEEP GREY NCS S 7500-N
			
27W ABETE FONDENTE	0U MOCHA NCS S 8502-R	041 MARKINA	40 URBAN NCS S 8000-N
			
35W ROVERE NATURAL	1N SOFT GOLDEN NCS S 2030-Y20R	051 TORANO	01 NUDE NCS S 1002-Y
			
36W JATOBA SABLÉ	05 WILD NCS S 6005-Y20R	061 SOLID ASH	01 NUDE NCS S 1002-Y
			
37W NOCE ROYAL	06 DIVA NCS S 7005-Y80R	071 SOLID FOG	02 ROYAL NCS S 2002-Y
			
38W NOCE POMPEI	0U MOCHA NCS S 8502-R	081 SOLID CLAY	0F ROMAN NCS S 6005-Y80R